

The ECHO

Award-Winning
Newsletter of the
Grand Canyon State Chapter
Studebaker Drivers Club

Volume 34 Issue 10

November 2006

Inside This Issue

President's Message



Meeting Highlights



Upcoming Events



Omaha Meet News



Alaska Cruise



Foundation News



2010 Meet Update



Tech Tip



Classifieds



Another Fallen Champion?

Here is a 1961 Studebaker wagon located somewhere in Arizona. This 6 cylinder is all by itself, not another vehicle to keep it company.

The 1st person who can reveal its location will get next year's annual National dues paid.

Email Mike Barany at mbarany@cox.net or phone him at 623-825-7144 with your answer. The winner will be announced at the Holiday Party.

See the picture in full color at the Chapter web site

<http://www.grandcanyonsdc.com>

Click on the November 2006 Newsletter link.

Editorially Speaking

Recently, a raffle was held through an on-line raffle site for The Studebaker Foundation. Despite having a name similar to the SDC's foundation, the raffle was not a project of the Studebaker National Foundation. It is always a good idea to get as much information as you can about an organization before contributing so you know where your donation is going. You can learn more about our foundation on page 9 in an article written by Brian Millette, a Studebaker National Foundation board member.

This month the Chapter activity offers a wonderful opportunity for members from the valley to meet with the members from the northern part of Arizona. Hope many of you will drive to Camp Verde on the 18th for the economy run and picnic. In March, members will have another chance to get together at the annual All Arizona Studebaker Gathering. Watch for details.

Thanks to our contributors this month - Gary Keating, Richard Dormois, Larry Vahe, Scott Grainger, Brian Millette and Mike Barany. Be sure to drop a note to Mike when you think you know the location of the Lark station wagon.

Best wishes for a wonderful Thanksgiving.

Chris

THANK YOU

Thank you to the Grand Canyon State Chapter of the SDC for the beautiful clock and the best wishes that go with it. I appreciate the words of encouragement that I received from the members during my editorship.

I will always remember fondly the experiences I had. The clock is wonderful and the sentiment is even better.

Thanks,
Ruth Cushing
Editor, 2003-2006

Order your Chapter name badge by contacting Chris Collins at 602-995-311 or chuckstude@juno.com. The price of each badge is \$4.00.

Check out the Chapter website

at <http://www.grandcanyonsdc.com> to view the *ECHO*. Additional features of the online version include color pictures and more pictures related to stories in this issue.

The *ECHO* is the official newsletter of the Grand Canyon State Chapter, SDC and is published 11 times per year. Contributions are welcome and encouraged. Please submit articles, tech tips, etc. by the 20th of the month preceding publication. Other newsletters are welcome to use any material with proper credit given.

GRAND CANYON STATE CHAPTER OFFICERS AND BOARD 2006

President

Scott Grainger
4135 E Fairview Circle
Mesa, AZ 85206
480-924-0826
scott@graingerconsulting.com

Vice President

Chris Eastburn
14211 W Windrose Dr
Surprise, AZ 85379
623-266-6989
racheleastburn@cox.net

Secretary

Richard Dormois
PO Box 30103
Mesa, AZ 85275
480-827-8178
1938studeman@earthlink.net

Treasurer

Chuck Collins
2410 W Freeway Lane
Phoenix, AZ 85021
602-995-5311
cstude1@cox.net

Board Members

Larry Cushing
21831 N 91st Ave
Peoria, AZ 85383
623-376-7054
wlracfam1@msn.com

John Kroulik
5218 W Tierra Buena
Glendale, AZ 85306
602-375-8627
llkroulik@yahoo.com

Larry Vahe
5624 E Everett Dr
Scottsdale, AZ 85254
602-494-6081
sirsnow1@cox.net

ECHO Editor/Membership

Chris Collins
2410 W. Freeway Lane
Phoenix, AZ 85021
602-995-5311 Fax: 602-995-2146
chuckstude@juno.com

Webmaster: Linda Saar 304 E Hackamore, Mesa, AZ 85201 480-898-3425 Isaar@aol.com
2010 International Meet Chairman: Larry Vahe

Pacific Southwest Zone

Regional Manager/Ariz. Chris Collins
Zone Coordinator Lloyd Prather
National Director Carl Thomason

2410 W. Freeway Ln., Phoenix, AZ 85021
9104 Viola St., Bakersfield, CA 93307
43306 Running Deer Dr., Coarse Gold, CA 93612

602-995-5311
661-832-6930

SDC National Officers 2005/2006

President Ed Reynolds
Vice President Richard Dormois
Secretary Jan Lockmon
Treasurer Brian Millette

97 N 150 W Greenfield, IN 46140
P.O. Box 30103, Mesa, AZ 85275
9417 W. Cedar Hill Circle S, Sun City, AZ 85351
3434 Anthem Way Ste 118 PM 267, Anthem, AZ 85086
edr@studebaker-intl.com
1938studeman@earthlink.net
lockmon@cox.net
abmillette@cox.net

President's Message

Yours truly didn't get to the last meeting at the restaurant in Cave Creek. Thank you to our hosts Bill and Mary Cervini for arranging the place for us. I was contagious or at least felt like I was so I didn't attend. I understand that we had a nice turn out of cars and members including a pretty special new addition to the McFadden stable of antiques. Anita's new '23 Light Six touring car is pretty slick. Kevin was kind enough to send a few photos my way.

This month's meeting is hosted by Barbara and I. The meeting will be at Ft. Verde State Park in Camp Verde. Before you get there, stop at the Union 76 gas station and Waffle House at about 24th Ave and Bell Road to gas up for the economy run up to Camp Verde. Then plan to park your Stude on the parade grounds of the old fort for a show and then some slow drags. We will be the big event in Camp Verde that week end so expect some local visitors (the local paper will be carrying a public notice of our gathering and the show on the grounds). This will be a pot luck picnic. See the details elsewhere in this Echo. Come out and visit with some of our chapter members that you haven't seen in a while. This meeting will draw folks from Prescott, Ashfork, Show Low, Flagstaff and other points north.

The December meeting is our annual membership appreciation and holiday party combined. For those of you that really enjoy decorating your table for the holidays, here is your chance. Put on the Ritz, pick a table and doll it up! There are still tables available, contact Lorilee Kroulik to reserve a table to decorate, 602.375.8627. The holiday gathering will also include an auction. This auction generates a large portion of the funds that we operate on so bring your stuff out. Some lucky soul will surely bid on it and be proud to take it home, knowing that they have helped the chapter and had a good time to boot.

DRIVE YOUR STUDEBAKER
AND DRIVE SAFELY.

Scott Grainger

2007 Meeting Hosts Needed

If you would like to host a meeting in your home or garage, a restaurant, a park or other interesting place please contact one of the board members. January and March have hosts but February, April, May, September, October, November and the Holiday Party are available.

Studebaker

Welcome New Members

Ralph & Barbara Robbin
7158 W. Planada Lane
Glendale, AZ 85310
623-362-1474
ralphrobbin@cox.net
1948 Land Cruiser

CELEBRATE!

November Birthdays



2	Scott Grainger	13	Kathy Becklund
3	Sam Powell	14	Marilyn Holub
5	Keith Davis	18	Mike Barany
7	Nikki Ready	21	Jim Van Eyck
8	Mary Barany	23	Denny Lockmon
8	Vicky Crowe	29	Mike Cazier
9	Mary Powell-McConnell		
11	Dana Kocher	29	Joe Pistle
11	Richard Crouthamel		
11	Max Waun		

November Anniversaries

5	Brian & Aleta Millette
7	Lester Jackson & Julie Sackett
8	Jim & Betsy Provenzano
10	Max & Frances Waun
15	Colin & Suzanne Fort
20	Dan & Laurie McDonald
24	Gary & Judy Horner

Condolences to Susan Francisco on Wayne's passing, Thursday, November 2nd. Wayne was a long time member of SDC and the Chapter, having served as president of both organizations as well as the AOAI.

Good Wishes to Rosalie Torske who is recovering from cataract surgery.

Please keep Southern Arizona Chapter members Lloyd & Millie Watts in your thoughts as Lloyd recovers from a stroke.

2007 Dues Paid

Keith & Nancy Davis, Jim Lawrence, Jim & Aileen Ten Eyck and Stuart Tritt have paid their Chapter dues for 2007. Thank You!

Dues are due January 1st. You can pay with your party reservation, at the holiday party or through the mail.

October Meeting Highlights

Deanna Manley called the meeting to order at 5:05 pm Saturday October 21, 2006 at Harold's Corral, 6895 E. Cave Creek Road in the absence of President Grainger who was ill. Bill and Mary Cervini were thanked by the membership for hosting a wonderful event at a great venue. The membership was introduced to Anita MacFadden's new 1923 Light Six Touring and Bill and Cheryl Simmons' new Daytona out for the first time since restoration. We celebrated birthdays of Bill Cervini, Larry Cushing, John Kemper and John and Annie's wedding anniversary. New member Ralph Robbin was introduced. Denny Lockmon shared that Wayne Francisco may have suffered a stroke while undergoing a hernia procedure and is recovering.

Studebaker designer Bob Marcks made a very informative presentation on what might have been if things had gone differently as Studebaker was meeting its demise and shared some neat illustrations.

Sign up sheets were passed for 2007 chapter meeting hosts and table settings for our Holiday Party.

Bill Lynch, Steve Fein and Ron Crowe were nominated for 2007 board positions, Chuck Collins for Treasurer and Richard Dormois for Secretary. Each said they would serve.

Denny Lockmon gave a report of the 42nd Studebaker Drivers Club International Meet at Omaha, Nebraska.

Minutes of the September 16, 2006 chapter meeting were accepted as published in the *Echo* Newsletter. Chuck Collins reported that the Chapter Treasury is healthy.

Chris Collins gave the *Echo* Newsletter report and gave Ruth Cushing a national second place award she received from the Studebaker Drivers Club Publications Committee for editing the *Echo* as well as beautiful sculpted clock from the Chapter for three years dedicated service as editor of the *Echo* Newsletter.

Ken Michael reported on the Thunderbird Anniversary show in Phoenix 10/20 he and Steve Fein and Chris and Chuck Collins attended. Expressions of interest in the Orphan Car Show, 10/22 at Los Olivos Park were high.

Deanna shared details of the November chapter meeting at Fort Verde State Park in Camp Verde hosted by Scott and Barbara Grainger November 18.

Details of the Holiday Party and benefit auction at the home of John and Lorilee Kroulik December 2 were shared.

Still need volunteers and a venue for the All Arizona Studebaker Gathering as the Steele Park site has become unaffordable.

Frances Rebstock reminded the membership of the first anniversary of the Studebaker National Museum and Chris Collins shared details of the results of our ten thousand dollar contribution.

No takers yet on a volunteer representative for the Hobbyist Council meetings.

Sara MacFadden won the Studebaker driver's prize and Bill Simmons won the 50-50 drawing of \$35.00.

Mrs. Manley adjourned the meeting at 5:53 PM.

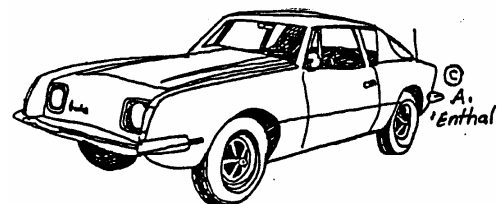
Submitted by Richard Dormois, secretary



Anita MacFadden's new car, a 1923 Light Six Touring, as it appeared in the 1950s. Look for Kevin's story about acquiring the car in next month's *ECHO*.

Attending were: Bob & Bobbie Marcks, guests; Bill & Cheryl Simmons, 1964 Daytona; Linda Saar & Dennis Lynde, 1963 GT Hawk; Richard Dormois; Claudia Robinette; Jan & Denny Lockmon; Al & Anna Riedel; Gary & Sandie Keating; Malcolm Stinson, 1963 Champ; Jan Stanton; John Kemper, 1958 Hawk; Steve Fein, 1966 Cruiser; Bill & Mary Cervini, 1964 Avanti; Ron & Vicky Crowe; 1964 GT Hawk; Kevin, Anita & Sara MacFadden, 1923 Light 6 Touring; Ken Michael, 1963 Cruiser; John & Fran Rebstock; Ron & Sherry Watson; Bill & Dolores Lynch; Ruth & Larry Cushing; Harold & Deanna Manley; Larry Vahe; Chuck & Chris Collins, 1966 Cruiser; Ike & Virginia Quigley; Brian & Aleta Millette; Patrick Eastburn; Will Eastburn & Domenica, 1957 Sedan; Ralph Robbin, 1948 Land Cruiser; Bob Lorenz, 1956 Power Hawk.

Thanks to Bill and Mary Cervini for hosting the meeting.



GRAND CANYON STATE CHAPTER UPCOMING EVENTS

- NOVEMBER 6** ARIZONA AUTOMOBILE HOBBYIST COUNCIL (AAHC) MEETING, 7:30 PM AT DON SANDERSON FORD, 5300 NW GRAND AVE, GLENDALE. INFO: GEORGE WOODS 480-473-0946. ANY MEMBER IS WELCOME TO ATTEND. IF YOU WISH TO SERVE AS OUR CHAPTER'S REPRESENTATIVE CALL SCOTT AT 480-924-0826.
- NOVEMBER 18** **CHAPTER MEETING. SCOTT & BARBARA GRAINGER HOST THE DRIVE YOUR STUDEBAKER ECONOMY RUN & PICNIC AT FORT VERDE STATE PARK IN CAMP VERDE. VALLEY MEMBERS MEET AT 8:00 AM AT 76 STATION, 24TH AVE & BELL TO TOP OFF TANK. HAVE BREAKFAST NEXT DOOR AT WAFFLE HOUSE, LEAVE AT 9:00 FOR CAMP VERDE. MEMBERS FROM NORTHERN ARIZONA PLAN TO ARRIVE AT THE PARK BY 10:30 AM. BRING YOUR OWN PICNIC LUNCH. BEVERAGES WILL BE PROVIDED BY THE CHAPTER. SEE PAGE 6 FOR MORE DETAILS. INFO: SCOTT AT 480-924-0826.**
- DECEMBER 2** **HOLIDAY AND MEMBER APPRECIATION PARTY AT THE HOME OF JOHN & LORILEE KROULIK, 5218 W TIERRA BUENA, 2 BLOCKS NORTH OF GREENWAY RD OFF 51ST AVE. 1:00 PM. 10-12 VOLUNTEERS ARE NEEDED TO SERVE AS TABLE HOST/ HOSTESSES AND PROVIDE PLACE SETTINGS FOR 8 W/TABLE COVER, FLATWARE, NAPKIN, PLATE, DRINKING GLASS & CENTERPIECE. FIVE OF THE TABLES ARE ROUNDS AND A WHITE PLASTIC TABLE COVER WILL BE PROVIDED. CONTACT DEANNA AT 480-981-8886 OR HPDLMANLEY@MSN.COM IF YOU CAN SERVE.**
- A WORK PARTY WILL MEET AT THE KROULIKS FRIDAY EVENING FROM 4:00 - 8:00 PM FOR LAST MINUTE TIDY UP AND TABLE SET UP. TABLE HOSTESSES CAN SET UP THEN OR BEFORE 1:00 ON SATURDAY. WE'LL HAVE PIZZA AROUND 6:30.**
- AUCTION! ONCE AGAIN WE WILL HAVE AN AUCTION WITH RICHARD DORMOIS AS THE AUCTIONEER. STUDEBAKER AND NON-STUDEBAKER ITEMS, A NICE WHITE ELEPHANT AND HOMEMADE ITEMS ARE ALL GREAT FOR A FUN AUCTION.**
- THIS YEAR FOR OUR CHARITABLE PROJECT WE ARE REQUESTING A DONATION OF A NEW OR GENTLY READ BOOK FOR CHILDREN OF ALL AGES FROM PRE-SCHOOL TO HIGH SCHOOL.**
- STUDEBAKER DRIVERS WILL BE DIRECTED TO PARK IN THE KROULIKS YARD THROUGH ALLEY ACCESS. BRAND XES SHOULD PARK IN STREET.**
- CHAPTER WILL PROVIDE CHICKEN, RIBS, SIDE DISHES AND BEVERAGES. PLEASE BRING A FAVORITE HOLIDAY DESSERT AND CHAIRS FOR YOUR PARTY. RESERVATIONS ARE REQUIRED AND MUST BE MADE BY NOVEMBER 26TH. USE THE FORM INCLUDED IN THE NEWSLETTER OR CONTACT CHUCK AT 602-995-5311 OR CHUCKSTUDE@JUNO.COM. NEED MORE INFORMATION? CONTACT JOHN OR LORILEE AT 602-375-8627.**
- DECEMBER 3** TOYZ FOR TOTZ CRUISE TO WICKENBURG SPONSORED BY THE REMEMBER WHEN CRUISE ASSOC. MEET AT HONEYWELL NORTH PARKING LOT 9:00 AM. CRUISE AT 10:00 AM. ENTRY IS ONE NEW UNWRAPPED TOY. INFO: BOB AT 602-943-3532
- JANUARY 20** **WINTER STUDEBAKER CELEBRATION AT ARIZONA GOLF RESORT, POWER & BROADWAY RDS., MESA. 10:00 AM - 4:00 PM. CAR SHOW, SWAP MEET, PEOPLE'S CHOICE JUDGING, AWARDS AND TECH SESSION. INFO: RICHARD AT 480-827-8178 OR 1938STUDEMAN@EARTHLINK.NET**
- JANUARY 21** SOUTHERN ARIZONA CHAPTER HOSTS ITS ANNUAL BANQUET AT TANQUE VERDE GUEST RANCH. EAT AT 11:30, ARRIVE EARLIER TO VISIT. \$18.00 PER PERSON. SEND CHECK MADE OUT TO SAC TO CHUCK STANFORD, 830 E. HALCYON RD, TUCSON 85719

NOVEMBER EVENT

**November 18 — DRIVE YOUR STUDEBAKER
ECONOMY RUN TO CAMP VERDE & PICNIC
AT FORT VERDE STATE HISTORIC PARK
Hosted by Scott & Barbara Grainger**

8:00 AM Economy run participants meet at the 76 gas station (formerly Exxon), 2446 W. Bell Rd. (north side just east of I-17) to top off gas tank and have breakfast at Waffle House. 9:00 AM Leave and drive to Fort Verde; stop to refuel at the Maverick gas station. Get a receipt for your gas fill up and bring to the check in point at the Parade Grounds at Fort Verde park.

Directions from Phoenix: Take I-17 north to Hwy 260 exit (exit #287). Do not exit at #285 despite signs to the Fort. Turn east on 260 towards Camp Verde about 1 mile to Finney Flat Rd.; turn left on Finney Flat Rd., stop at the Maverick station if you are in the economy run to top off, continue if you are not. Remain on Finney Flat, go up the hill and down Main Street to Holloman St. Turn left on Holloman and go 1 block to the parking lot on the left by the park rest room building. Studebakers will go a little farther down the road and turn left into the Fort Verde Parade Grounds where they will be on display. We will picnic under the ramada across the street from the Fort parking lot and restrooms.

Members arriving from the northern part of the state please use the directions above from exit #287 or

follow the signs to Fort Verde from exit #285.

There will be a special tour of the Fort Verde museum and buildings beginning at 11:15 AM. The tour will take about an hour and will include a special presentation by General Crook (if he is feeling well; he is celebrating his 175th birthday this year) and a hands-on display of black powder rifles and black powder shooting demonstrations by some of the soldiers (Park Rangers) at the fort.

After the tour we will have our picnic in the covered ramada next to the football field and across the street from the parking lot with the brand xes. (Approximately 12:30 - 1:30.)

From about 1:30 to 2:00 pm there will be a short business meeting, then slow drags from 2:00 to 3:00.


The town of Camp Verde is looking forward to visiting and kicking the tires with us. There will have been a press release and few photographs provided for them to place in the local paper advertising that there will be Studebakers on the Parade Grounds at Fort Verde mid-day. Bring your information sheet to place in the window of your Studebaker to tell our visitors all about your Stude.

There is a lot more to do in the Camp Verde area so plan to spend all day and enjoy yourself.

More about the Economy Run

All members are welcome to join the caravan to Camp Verde; however, only Studebakers will participate in the economy run. First, second and third place prizes will be awarded for the best gas mileage and the Gas Hog award will go to the Studebaker with the worst mileage.

November 2006

Sun	Mon	Tue	Wed	Thu	Fri	Sat
Questions? Call Chris at 602-995-5311			1	2	3	4
5	6 AAHC Meeting	7 Election Day	8	9	10	11 Veteran's Day
12	13	14	15	16	17	18 Economy Run & Picnic
19	20	21	22	23 Thanksgiving	24	25
26 Party reserva- tions due.	27	28	29	30	Dec. 1 Work party at Krouliks	Dec. 2 HOLIDAY PARTY

More International Meet Highlights

Congratulations to the SDC officers who were re-elected for another one year term -

President	Ed Reynolds
Vice President	Richard Dormois
Secretary	Jan Lockmon
Treasurer	Brian Millette

A few stats: 649 total registrations, 213 vehicles judged, 139 displayed, 518 attended awards banquet.

Good news for Chapters - the indemnity insurance for Chapter officers will be free to chapters beginning July 1, 2007.

TABLE HOST/HOSTESSES NEEDED

Volunteers are needed to serve as host/hostesses for 10-12 tables at the Chapter holiday party, Saturday, December 2nd. A table hostess provides a table covering, place settings for 8 with plates, flatware, drinking glasses and napkins as well as a centerpiece. Any other goodies are optional. Typically the tables are 8' but five of the tables will be rounds and a table covering will be provided for those.

You can set up your table either at the work party Friday evening or before the holiday party on Saturday. To volunteer or if you have any questions please contact Deanna Manley at 480-981-8886 or Lorilee Kroulik at 602-375-8627.

Orphan Car Show and Picnic

Studebakers ruled at the 16th annual Orphan Car Show at Los Olivos Park Sunday, October 22nd with the Chapter winning the Club Participation Award given by the hosts, the Valley Roadrunner Chapter of the VMMCA.

Studebakers and other orphans started arriving before 9:00 and the parking lot soon had around 65 interesting cars and trucks displayed for our viewing pleasure. The highlight of the show was Walter and Nikki Ready's Tucker which attracted a crowd immediately and earned them the People's Choice award. They also were awarded a prize for having the "Curviest Car". Other fun awards were given but no others were won by club members although a few won door prizes. Delicious pizza provided by the Chapter was enjoyed along with time spent visiting with our Studebaker friends.

Thanks to everyone who attended - Willard & Ruth Pike, 1954 Packard; Steve Fein, 1966 Cruiser; Richard Dormois & Claudia Robinette, 1960 Lark; Hugh Mc Dowell and friend Alex, 1953 Champion and 1963 GT Hawk; Denny Lockmon & Al Riedel, 1953 Champion Rod; Walter & Nikki Ready, 1948 Tucker; Malcolm Stinson & Jan Stanton, 1963 Champ; Dennis Lynde & Linda Saar, 1963 GT Hawk; Ken Michael, 1963 Cruiser; Chuck & Chris Collins, 1966 Cruiser; Ralph Robbin, 1948 Land Cruiser; Bill, Peggy & Michell Eastburn, 1964 Wagonaire. Fred Moore came to look around.



INTERESTING WEB SITES

<http://www.answers.com/topic/stp-motor-oil-company>
History of STP

Larry Swanson sent the following URLs from youtube with vintage commercials.

<http://www.youtube.com/watch?v=7wGQGoqDakc>
<http://www.youtube.com/watch?v=YF8i4iAohjw>
<http://www.youtube.com/watch?v=bBZxcLfjiGY>
<http://www.youtube.com/watch?v=eOm5P1AkUi4>

<http://www.network54.com/Forum/23885/>
Studebaker truck talk forum.

<http://chathamhistory.org/archivechickenbridge.html> -
Look for the Studebaker truck.

Great Holiday Gift

If you know a Stude fan who is not a member of SDC or have a family member who likes Studebakers, then give a gift subscription at \$19.95 for first year membership. Visit www.studebakerdriversclub.com/giftmembership.asp or call Cornerstone Registration at 763-420-7829.



Nikki Ready poses with the Tucker she and Walter drove to the Orphan Car Show. They won the People's Choice and Curviest Car awards.

CRUISE TO ALASKA

BY GARY KEATING

While reading the current October issue of *Hemmings* last year I noticed a full page ad promoting the Hemmings Motor News Alaska Cruise. It was scheduled to take place in June 16-23, 2006. I had promised Sandie (my bride of 42 years) a cruise. This promise was made in February 2005. Thinking that I needed to fulfill my eight month old promise to Sandie and take a cruise with a bunch of 'gearheads', I presented it to my lovely lady and she accepted. Since we have never cruised before (on a boat---not Central Avenue, Phoenix) we did not know what to expect. We had never seen potties that warned you to be off and close the lid before you flushed. It only took one time to figure out the warning. Because it was Sandie's present I splurged and took a higher deck-level balcony suite. Later we were very thankful we did that.

We flew to Seattle the Friday morning before our departure. The ship departed punctually at 4:30PM as advertised. After mandatory muster drill for lifeboat use we had free time the rest of the evening. Muster drill was an excellent time to 'bolster' our shaky confidence about going to sea and it supplied a few remarks and jokes about some old ship called the Titanic. I wonder what that was about? Anyway, after moving into open water the Captain announced over the p.a. system that we would have good weather and mild four to eight foot seas while moving along the coast. I had my digital camera available and took many beautiful pictures of Seattle and surroundings during the departure. We watched the Pilot Boat come along side our stern to pick up the harbor pilot who helped the Captain and crew guide the ship to open waters. The marine activity is very high in the Seattle area. We saw many commodity ships entering and leaving; container ships, tankers, etc. Fishing and recreational boats were in abundance. Also an uncommon sight in Arizona, we saw many airplanes with water pontoons.

About midnight Friday night, the first night out, Sandie and I woke up at the same time hearing structural groaning in the frame of the ship and sliding first toward the head of the bed and then towards the foot. I stumbled and staggered to the balcony sliding door where all I could see was pitch black darkness broken by white violent waves being illuminated by lights on the ship.

The next morning was the first Hemmings News meeting. We met for breakfast in a reserved portion the dining area at 8:00 AM. Of course, the major item of conversation was the 'exciting' ship ride. It started at midnight and continued until noon Saturday, when we slipped into the inner-passage leaving the rough seas behind. We later learned that the weather forecast missed a low pressure that was generating eighteen to twenty foot seas. Half of the ship's passengers and one third of the crew were sea sick. I survived without the sickness, but Sandie spent all morning

and half the afternoon in bed. The first Hemmings meeting was held just after breakfast that morning. Later on Sunday about noon we docked in Juneau.

The first Hemmings meeting was down in attendance because of the rough seas. By the second meeting in the afternoon we had a bigger crowd. We had survived the heavy seas. We met the following Hemmings folks at this meeting: Jim Menneto, Publisher; Richard Lentinello, Editor-in-Chief; and several other editors. The three Hemmings meetings during the cruise were informative about the Hemmings publications, the current state of car collecting and the old cars that are now becoming collectables.

Juneau was fun to visit. It is the only state capital in the United States that cannot be accessed by outside highway. You get there by boat or plane only. The Mendenhall Glacier can be seen by taking a short bus ride, or, for those with excess funds, you can do fixed wing float plane or helicopter rides. The four major cruise lines that stop at Juneau give you many ways to be separated from your expendable income whether on board or on shore. Sandie and I have been trying to visit every state capitol building of the states we have visited. We walked to Alaska's capitol and toured the building. Unlike most government buildings, there was no security anywhere for their building. If a terrorist were to do something he would have no avenue of escape. One amusing note while touring the building, we found a Senator Guttenburg's office right next door to another office that had a sign reading PRESS ROOM. The person assigning offices in the building must have had a sense of humor (Guttenburg PRESS).

The next day (Monday) we docked at Skagway. Skagway is an old restored-for-tourism gold rush town. The cruise lines own most of the town and have invested a lot of money in rebuilding the structures, hoping that you will do the same. They have an excellent narrow-gauge railroad that will take you on a \$100 per person ride deep into the inland wilderness, climbing over 2865 feet in about 20 miles of track. The views are spectacular! After returning from the train ride we discovered an antique car display. Some old car collectors in Skagway knew we were coming. They had on display in a prominent parking lot 4 cars and 2 trucks, all restored. Sorry to say, no Studebakers. Skagway is accessible off the Alcan Highway. It is a sight to see, especially the Red Onion Saloon and Brothel with all the upstairs working rooms restored. No, there were no residents in the rooms.

Tuesday was supposed to be our spectacular day. Originally scheduled was a day at Glacier Bay. It turns out that the cruise lines have voluntarily eliminated some of the trips to the Bay because of 'global warming'. *Continued on page 9.*

STUDEBAKER NATIONAL FOUNDATION

By Brian Millette

A little over two years ago, the Studebaker National Foundation was started with the purpose to "raise money to provide funds for various charitable and educational purposes that are related to all aspects of Studebaker." In those two short years we are happy to announce that over \$20,000.00 has been collected from various sources.

Because of this the Foundation has announced that two \$500.00 scholarships will be presented to successful applicants at the 2007 International Meet to be held in South Bend. This is just the beginning of a variety of programs that the Foundation will be looking at in the future. If you have any program ideas, please contact one of the Board Members listed below.

In addition, over \$7,000.00 were added because of the very successful auction held at the Omaha International Meet. When renewing SDC Memberships it is also now possible to donate to the Foundation as a check off. The money donated is totally tax deductible and will allow the Foundation to achieve its goals even quicker.

The Foundation can also accept donations other than money and these types of donations are always welcome.

For 2007 the Board of the Foundation is as follows: President, Chester Bradfield; Vice President, Linda Sinclair; Secretary, Jan Lockmon; Treasurer, Chris Collins; and Directors Richard Dormois, Colin Fort and Brian Millette. Our next meeting will be in Mesa, Arizona January 20th, 2007.

2010 COMMITTEE UPDATE

By Larry Vahe, Co-Chair

On Sunday, October 29, 2006, your 2010 Committee met for more discussion on the international meet. The agenda covered only a few topics but took several hours. Discussed was what had happened in some of the prior meets, mostly Spokane and Omaha, and how we could learn from them. We also discussed 'themes' and it was suggested we tie the meet into old Arizona via featuring a 1926 Studebaker 'Sheriff' and perhaps use the sheriff's 'star' for a dash plaque design. There are many other themes and logos to consider so we'll narrow down the list to, say, the top ten and then make a decision.

Of course, the bulk of the meeting was taken up with the location of the meet. Flagstaff was to have made a presentation to your committee on October 14, 2006 but this meeting was mutually canceled when certain facts came to light. I made a trip to Flag and toured the proposed convention site at Clay and Route 66. In discussing the main reason for canceling the meeting it was determined that the convention bureau could not provide enough parking spaces thereby making this site not a viable option. Based on this and other input it has been decided to hold the meet in Maricopa County, either the first or second week in October, 2010. In looking at potential sites your committee will be previewing some east valley location the second week in January, 2007. We welcome any input or suggestions as to location so please feel free to contact me. Remember, in looking for location sites we need enough room for 600+ registrations, 350 cars and 30,000 sq ft of indoor vendor/meeting space.

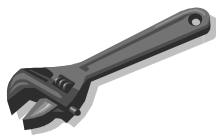
Cruise to Alaska continued from page 8.

The theory is that too many ships add to the ecological warming of the Bay thereby causing faster calving by the glaciers. With my understanding of thermal dynamics I find this very hard to believe, but never-the-less, our cruise was moved from the Bay. They moved us to some remote place that we had never heard of, Icy Straight Point. This is a small village of Tlingit Indians (pronounced Klinkit). The village is called Hoonah. What we thought would be our worst day turned out to be the best. The little Indian village is inhabited by about 800-900 Indians. They have a restored salmon processing plant that doubles as a tourist boutique building. The island is very picturesque. We learned that all of Alaska's coastal forests are rain forests. The town had a major fire that burned most of the village structures some years ago. The cruise lines, knowing a good thing when see it, provided the tribe with funds to rebuild. We talked to several members of the tribe. They were all very cordial and just as good speaking English as you and I. When Sandie and I go to Alaska again Hoonah will be on our itinerary. They are only accessed by ship, ferry, or plane. There are outfitters there with float planes and several B and B's. If you go there get ready to have a delightful time with some native Americans without going

to a casino. By the way, all these places can be Googled for more detailed information.

Wednesday we began our return to Seattle down the Inside Passage via Victoria, British Columbia. It was an interesting city, but slightly anti-climatic after Icy Straight Point. On the way down the straight we saw numerous wildlife on the shores. The straight is so tight that you wonder how the big cruise liner will pinch through. If you ever want to see what we saw just ask me. I can bore you for an hour with my digital pictures.

Sandie and I concluded that we are not your typical cruise type people. We like to see landscape. Much of the pretty coast was past by while we slept at night. The cruise ship is designed to help you part with more funds than the basic cruise price. They have casinos on board. They hold art auctions, jewelry auctions and sales of anything else that is a tourist type item. The ports-of-call also have a similar structure----buy, buy, buy before you bye, bye, bye. Long story short, I probably would not do another cruise----unless there were a bunch of 'gearheads' on board like this cruise. We made a lot of new car friends from Oregon to Maryland and in between. We were the only Studebaker folks in our group.



Technical Information

FREEZE PLUGS

Freeze plugs, expansion plugs, casting plugs, or whatever you want to call them are different for different engines. Brass plugs for the Stude V-8 in 1962-'64 with full flow oil filter blocks take a cup type plug, P/N 1550386. The 1951-'61 and 1962 blocks without full flow filters take a disc type plug, P/N 1539038. This disc type plug also fits 1934-'62 Commanders, Presidents, 6, 8, and V-8, and 1939-'60 Champions. For some reason, there are different size plugs for the 1961-'64 6-cylinder Champion engines. The ones that take a 1 1/2" are the same as the 1962-'64 V-8s. The other is a 1 7/8" with P/N 1550433 and is listed for 1939-'64 Champions.

This all may sound confusing and, if not, we could throw in the rear plug at the back end of the camshaft. For instance, the 1951-'62 V-8s use a 1 1/2" disc (same as the three on each side of the water jackets on the side of the block) and the 1962-'64 also takes a 1 1/2", but is a shallow cup and is steel instead of brass.

The 1939-'58 Champion takes a 1 3/4" steel cup and the 1959-'64 takes a 1 49/64" steel shallow cup. If you're still not confused, consider the oil galley at the left end of the V-8 block that takes a 1 1/4" plug. Again, the 1962-'64 takes a cup and the earlier V-8s take a disc type. Both of these are steel. In reality, any of the brass could be steel and vice versa - just that the brass will last longer by resisting rust. The main thing is to use the correct cup or disc (and size, of course) for your engine. The recess is deeper on the late models and trouble comes when you try to use the cup type on the earlier models that take the disc. The cup may pop out as they will not go in as far as they do on the late models.

Thanks to Ted Harbit for this information that was found in the June, 1999 issue of the *Brickyard Bulletin*, Dale McPhearson, editor

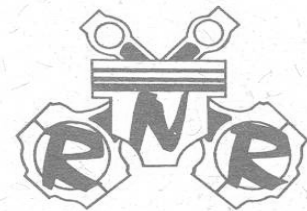
CLOSE OUT SALE EVERYTHING MUST GO

2004 PSW ZONE MEET SHIRTS

T-Shirts \$5.00 each
Polo Shirts \$10.00 each
Plus shipping if mailed.

To purchase your shirt contact
Scott Grainger at 480-924-0826
or scott@graingerconsulting.com

Complete Engine Rebuilding
Valve Specialists
Import & Domestic



Performance Machine

Robert Tanquary

(602) 861-3399
(602) 371-0556

2259 W. Shangri-La
Phoenix, AZ 85029

Studebakers Only

Kenneth Michael
1011 North Monarch Drive
Payson, Arizona 85541-3666

Cell 928-970-1562
e-mail kenmike@excite.com

Restore, repair, modify, buy, sell, trade Studebaker
vehicles. Upholstery is also done.

(818) 990-8916
Phone and Fax

Lionel Stone  **Studebaker**
PARTS AND SERVICE

High Performance
Reproductions

4476 Matilija Avenue
Sherman Oaks, California 91423

Arizona Contractor's License
Residential & Commercial

Installation & Repair
premierirrigation.org



Office: 623-337-5294
Fax: 623-337-5301

CHRIS EASTBURN
Cell: 602-380-1439

14211 W. Windrose Dr, Surprise, AZ 85379

Studebaker Parts

Inquire about holiday gifts for the whole family.

Chuck & Chris Collins
2410 W. Freeway Lane
Phoenix, AZ 85021
602-995-5311

E-mail: Chuck@StudebakerParts.Com

Visit our online store at <http://www.studebakerparts.com>

FOR SALE - STUDEBAKER CARS, TRUCKS AND PARTS - WANTED

TO PLACE OR CANCEL AN AD: Please contact Chuck Collins by phone at 602-995-5311 or e-mail Chuckstude@juno.com or write 2410 W. Freeway Lane, Phoenix, AZ 85021-4135.

Ads for members are free. Business card ads are \$25 per year. Ads not updated every 3 issues will be dropped.

STUDEBAKERS FOR SALE

1973 Avanti II. Rebuilt 350, 700R AT, New exhaust system w/Flow Master mufflers. Turner brakes installed. 7" wide 15" Mag 500 wheels. Good AC. Bronze exterior. \$14,000. Don Bjelke 480-203-4109

1962 Lark 2dr HT. 305 engine, 5spd, 9" Ford rear end. Disk brakes, new tires & rims. Too many new parts to list. \$3500 OBO Jim Mineo 602-938-5046 (3)

1962 GT Hawk. Automatic, Very good condition but needs interior. Blue w/white top. Indian Valley, ID Betty Gehrig 208-452-5071 (3)

1963 GT Hawk, 1963 Avanti, 1956 Golden Hawk, 1958 Silver Hawk in various conditions. Call for info: Tom Barker Kingman 928-757-7010 (3)

1962 1/2 T Champ pickup. V-8, 3 spd w/od. Starts and runs good but needs some TLC. \$1,800 OBO. Charley Haverstick 602-717-1778 (2)

1962 GT Hawk. All original. White exterior, blue interior. Auto, P.S., no AC, runs well & is in great condition. \$8,500. Riverside, CA. Teresa 951-347-5346 (2)

1930 President. Is mostly finished but needs to be completed. Lloyd Watts Sierra Vista 520-378-0726 (1)

1957 Silver Hawk. V-8. The engine and trans have been gone through. New paint and interior. Car is south of Tucson. Worth \$13,000 and would like \$9,500. Contact Jon Curtis, 951-288-0308 (1)

Help Keep America Beautiful,

1970 Avanti. 117,000 miles. Repainted in dark blue with a light blue reupholstered interior. 4 nearly new Michilen tires. Needs a little TLC. Jayne Deyoe 623-687-0873 Sun City (1)

1954 Packard Clipper Super Sedan. Pristine condition. \$18,000 OBO Willard Pike 480-895-8908 (1)

STUDEBAKER PARTS FOR SALE

289 Long block & transmission out of '64 Cruiser \$500.00. **3.31 Rear end** out of '63 Lark \$50.00 OBO Dan Kuhl 602-973-5517 (1)

Jet Thrust Long Block Engine. Just overhauled. NOS pistons, crank & cam. Includes oil pan. New Stainless valves. \$3,500. John Kemper 623-546-8434 (1)

Early C-Cab Cab w/small rear window, \$600. **2 C-Cab doors,** \$200. **2 1/2T chassis,** make offer. Ask about extra parts. Will 602-448-2093 (1)

1953 Studebaker engine w/3spd & od. Runs. Al 928-445-8234 (1)

MISC. FOR SALE

"Operator's Guide for 2R Series Studebaker Trucks" used but very serviceable, \$6. **"Owner's Guide"** for 1962 Grand Turismo Hawk never used, like new, \$9. Book- **"Studebaker, the Post War Years"**, by Richard M. Langworth, very good condition, 195 pages, \$14. Book- **"Automobile Quarterly", Studebaker's 115 Years**, 335 pages, 281 pages devoted to Studebaker, most other pages are about Bugatti, new book, excellent

condition, \$14. Book- **"American Cars"** by Leon Mandel, 448 pages, new condition, a book for lovers of all old American cars, Studebaker, also, size 10" X 12", a heavy book, about 5 lbs., \$15. **Studebaker dealers' show room pictures**, one of aerial view of Proving Ground. Another is of factories in South Bend and other assembly plants in USA and Canada. These are originals from a former Studebaker dealer in Bemidji, Minn. They measure 29 1/2" X 39". Good condition. \$75.00 Each. Buyer is to pay shipping costs. Contact: Glen Torske 520-495-4166 or rtorske@cox.net, or 6031 S. Galiuro Dr., Tucson, AZ 85706-4778. (2)

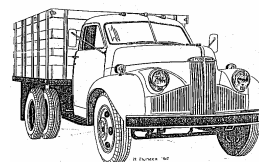
"Trucks....The Early Years" by Lloyd Van Horn. 360 pages...1000 pre 1930 pictures of Studebakers and other marques..... \$24.95 plus \$4 shipping to Lloyd Van Horn, 15272 North Street, Mason City, Iowa 50401 (1)

120 Issues of Turning Wheels from 1995 and up. \$120.00 + Shipping Willard Pike 480-895-8908 (1)

STUDEBAKER CARS/PARTS WANTED

Gary Keating is looking for a **1934 Land Cruiser**. Contact him at 480-835-7545 or at gary@draftingequipment.com (1)

Wanted: 9 1/8" clutch disk cores. Will pay \$10 each for rebuildable cores. Chuck Collins 602-995-5311 or ctstude1@cox.net (3)

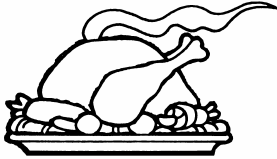


I
P
R
E
S
I
D
E
N
T
I
C
H
A
M
P
I
O
N
S
T
O
G
A
I
S
T
A
R
L
I
N
E
R
I
G
T
H
A
W
K
I
D
A
Y
T
O
N
A
I
E
R
S
K
I
N
E
I
S
I
L
V
E
R
H
A
W
K

I
C
R
U
I
S
E
R
I
A
V
A
N
T
I
C
O
M
M
A
N
D
E
R
I
R
O
C
K
N
E
I
E
M
F
I
P
H
A
E
T
O
N
I
S
T
A
R
L
I
G
H
T
I
S
K
Y
W
A
Y
I
W
A
G
O
N
A
I
R
E
I

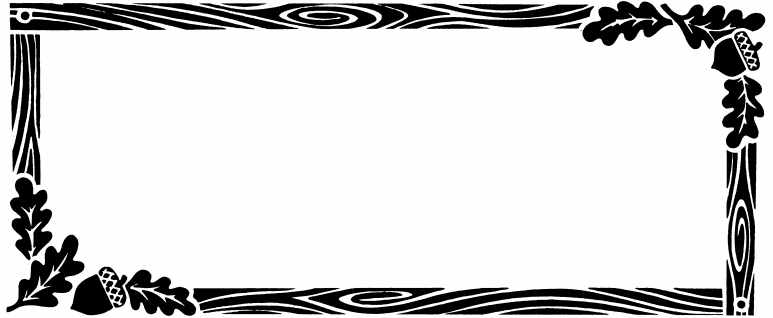
The *ECHO*

Newsletter of the Grand Canyon State Chapter, SDC
P.O. Box 37464
Phoenix, AZ 85069-7464



Happy Thanksgiving!

To:



Reminder

Attend the Chapter event on November 18.
See pages 5 & 6 for information.

Drive Your Studebaker!

GRAND CANYON STATE CHAPTER STUDEBAKER DRIVERS CLUB MEMBERSHIP APPLICATION

All memberships are for one year beginning on January 1. Chapter dues are \$18.00 per year, prorated at \$1.50 per month if joining during the year. Your dues include 11 issues of the award winning ECHO, a Chapter roster, membership in the Arizona Automobile Hobbyist Council and the best club activities throughout the year.

Membership in the Studebaker Drivers Club is compulsory in order to be a member of the Grand Canyon State Chapter of SDC, Inc. If you are not a member of SDC, add \$27.50 (\$19.95 for new members 1st year only) to your Chapter dues, which the treasurer will remit for you. Any questions can be directed to the address below or to Chris Collins at 602-995-5311. Please make check payable to the Grand Canyon State Chapter, SDC and send with this form to: GCSC Treasurer, P. O. Box 37464 Phoenix, AZ 85069-7464

Name _____ Spouse _____

Address _____

City _____ State _____ Zip _____

Telephone # _____ E-mail address _____ # of Children _____
(Under 18 years of age)

SDC Membership # _____ Expiration date _____
(May be found on address label of *Turning Wheels*.)

Birthday (Month & Day) Self _____ Spouse _____ Anniversary _____

Studebakers You Own: _____



More pictures of “Another Fallen Champion”. Where do you think it is?



Photos courtesy of Mike Barany.



Photos from the October meeting at Harold's Corral in Cave Creek. There is a common object in each picture. Perhaps some of you know who it is that Steve, Sara and Mary are holding?

Steve Fein with Flat Stanley and the Collinses '66 Cruiser.



Sara MacFadden poses with Flat Stanley and her mother Anita's 1923 Light Six touring Studebaker.



Meeting hostess Mary Cervini and Flat Stanley greet members from the patio of Harold's.

Pacific Southwest Zone Meet

Salt Lake City, September 8-10, 2006

